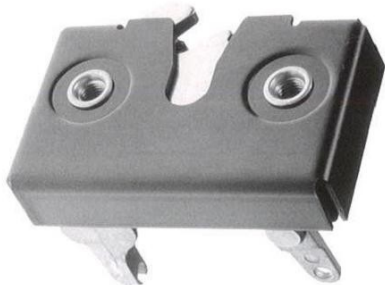


## 050-7200 HD Single Rotary Latch



Designed for use with various exterior push button handle assemblies.

### FEATURES/BENEFITS:

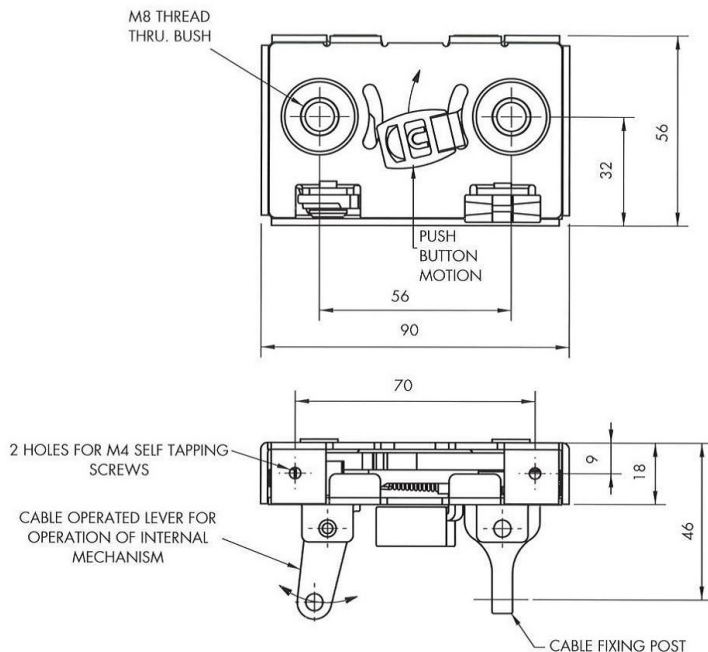
- Stronger version of anti-burst interior latch, can be operated remotely from the interior by cable or rod

### INSTALLATION:

- Easy to install--Recommended mounting fastener (2) CSK X M6 X 1 class 8.8 or better fasteners are required (not included) with recommended torque of 6 N-m. Tighten to the fasteners recommended torque value, however do not exceed 13.3 N-m.

Caution: Latch does not meet FMVSS 206 load requirements

Individual part dimensions are for reference only. Refer to individual part drawings for complete dimensions, specifications, and installation procedures. Engineering assistance and application drawings are available.



**West Alloy**  
Unit 18, iO Centre  
20 Kimpton Park Way  
Sutton  
Surrey SM3 9BW  
United Kingdom  
Tel: +44(0)1530 512460  
Fax: +44(0)1530 512461  
www.westalloy.com

**TriMark Europe**  
Cedar Court  
Walker Road  
Bardon Hill  
Coalville LE67 1TU  
United Kingdom  
Tel: +44(0)1530 512460  
Fax: +44(0)1530 512461  
www.trimarkeu.com

**TriMark Corporation**  
500 Bailey Avenue  
P.O. Box 350  
New Hampton, IA 50659  
United States  
Tel: 641-394-3188  
Fax: 641-394-2392  
1-800-447-0343  
www.trimarkcorp.com